



OUTDOOR  
PLEASURE  
OIL  
TECHNOLOGY



Italian styled coatings for habitat







# OUTDOOR PLEASURE OIL TECHNOLOGY



The OUTDOOR PLEASURE OIL range is the new generation of water-based outdoor products by IVE: "Italian Style" products for the Outdoor Design sector.

The range can be reproduced in an infinite number of colours. The OUTDOOR PLEASURE COLLECTION guide describes the unique effects and exclusive finishes for contemporary design. The guide is an additional part of the Lechler Color Design projects.

This brochure focuses on the technology supporting the range, which combines an infinite colour spectrum with extraordinary protection of wood from abrasion, foot traffic, weathering, stains, mould, fungi and bacteria.







# CERTIFICATIONS AND FEATURES

The OUTDOOR PLEASURE OIL product range is based on Lechler's sustainability guidelines. This translates into a commitment to limit emissions into the atmosphere during the "cradle-to-gate" process, and the desire to improve the products' aesthetics and durability, providing beautiful and long-lasting solutions.

## Sustainability and emissions



Products are formulated with more than 25 per cent **BIO-BASED** components according to ASTM D6866.



**LOW VOC** products

**CAM/A+/LEED BREEAM/IAC GOLD** certifications



The products of the line **OUTDOOR PLEASURE OIL** they are contained in packaging completely recyclable

## Maintenance



**Self-consuming products** that do not peel



Solutions that **do not require sanding**

## Resistance and durability



**UNI-EN 15457:2014** certification for preventing the proliferation of mould, fungi and bacteria



**UNI-EN 12720** certification for resistance to cold liquids, cleaning detergents, wine, coffee and alcohol.



**Uv-Defence** protective shield against ultraviolet rays and free radicals that degrade wood



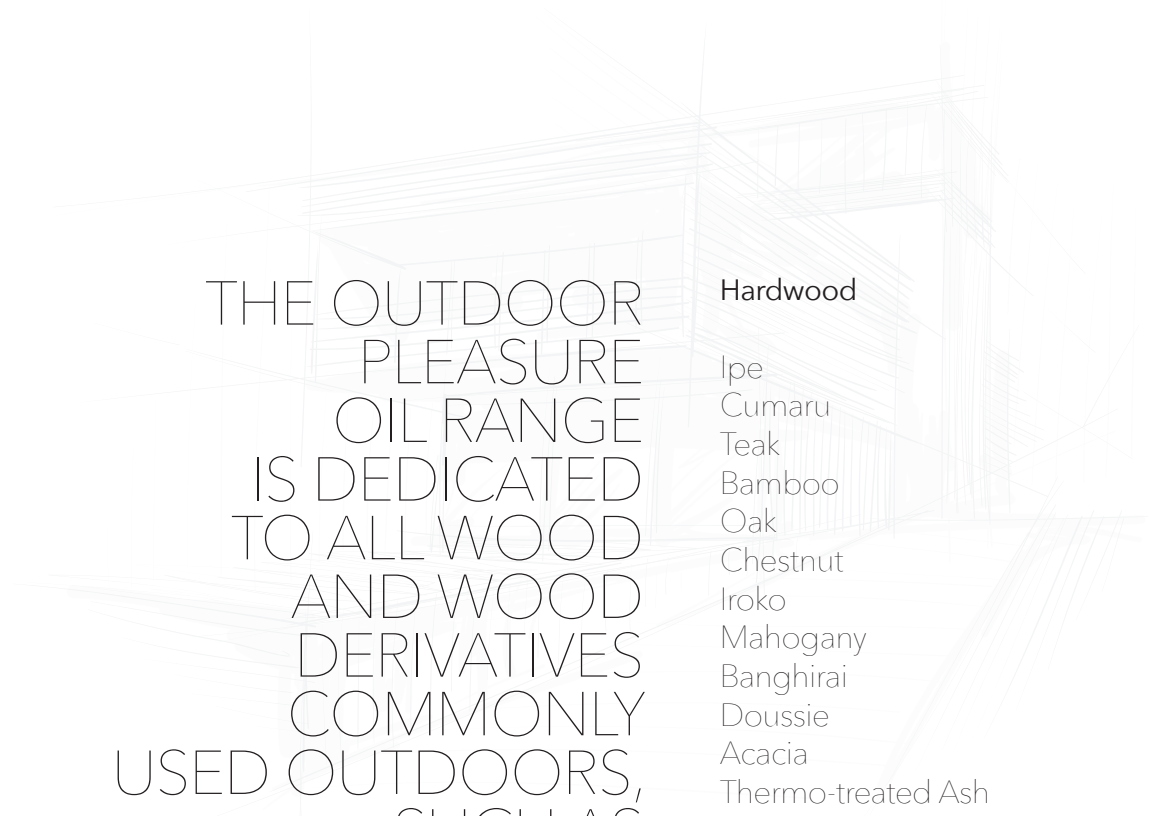
**Water-Stop** technology for water and weather resistance



Foot traffic **resistance**

**CAM**  
Criteri Ambientali Minimi





THE OUTDOOR  
PLEASURE  
OIL RANGE  
IS DEDICATED  
TO ALL WOOD  
AND WOOD  
DERIVATIVES  
COMMONLY  
USED OUTDOORS,  
SUCH AS  
HARDWOOD,  
SOFTWOOD,  
TREATED WOOD  
AND COMPOSITES.

#### Hardwood

Ipe  
Cumaru  
Teak  
Bamboo  
Oak  
Chestnut  
Iroko  
Mahogany  
Banghirai  
Doussie  
Acacia  
Thermo-treated Ash

#### Softwood

Spruce  
Pine  
Larch  
Accoya













# COLOURS AND EFFECTS



With the LW2 Wood & Water tinting system, the OUTDOOR PLEASURE OIL range has no colour limits. It allows the creations of transparent, semi-transparent and opaque colours and effects of the most important international colour standards in the sector, and the original COLOR DESIGN ranges designed for IVE.

The finishes' quality obtained by the system meets the highest quality standards for resistance, reliability and chromatic reproducibility.





## APPLICATIONS

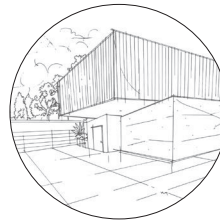
The range is designed to create and customise:



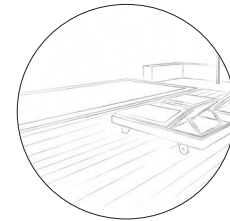
Tables and  
chairs,  
sun loungers,  
furniture



Furniture,  
coverings  
and flooring



Decorative  
and living  
coverings



Decks,  
terraces  
and flooring





# RANGE FINISHES



## OP 001 STAIN OIL WB

Highly penetrating **stainable impregnating oil** for deep protection of wood against degradation caused by solar radiation and attacks by fungi, moulds and bacteria.



## OP 101 VELVET OIL WB

Colourable high-protection **matt finish** with a silk effect.



## OP 201 NATURAL OIL WB

Colourable high-protection **matt finish** with a natural anti-glare effect.



## OP 301 TEXTURE OIL WB

Colourable high-protection, **extra matt finish with a textured effect**. It gives a three-dimensional look to the surface by interacting with light.



## OP 401 SATIN OIL WB

Colourable high-protection **semi-matt finish** with a satin effect.



## OP 501 DECK OIL WB

Colourable high-protection **matt finish**, non-slip and with excellent resistance to foot traffic and abrasion.







# TRANSPARENT EFFECT PROTECTIVE CYCLES

They provide protection while enhancing the original wood features.



## EASY OIL WOOD\* SINGLE PRODUCT CYCLE

1 OP 001 STAIN OIL WB  
(TONED)



2 OP 001 STAIN OIL WB  
(TONED)



3 OP 001 STAIN OIL WB  
(TONED)



\*\* For softwood it is recommended to apply OP 10 UNIFORMING PRIMER OIL WB in advance

## UNIVERSAL WOOD STANDARD CYCLE

1 OP 10 UNIFORMING  
PRIMER OIL WB



2 OP 001 STAIN OIL WB  
(TONED)



3 OP SERIES FINISHES  
(TONED)



can be catalysed with  
5% HYDROCAT 0094

## SOFT WOOD PREMIUM HIGH QUALITY CYCLE SOFTWOOD

1 OP 10 UNIFORMING  
PRIMER OIL WB



2 OP SERIES FINISHES  
(TONED)



3 OP SERIES FINISHES  
(TONED)



can be catalysed with 5%  
HYDROCAT 0094

## HARD WOOD PREMIUM HIGH QUALITY CYCLE HARDWOOD

1 OP 001 STAIN OIL WB  
(TONED)



2 OP SERIES FINISHES  
(TONED)



3 OP SERIES FINISHES  
(TONED)



can be catalysed with 5%  
HYDROCAT 0094

When coating wood rich in extractives for light pigmented colours, OP 11 TANNIN BLOCK WB is recommended as first application. To further increase product durability, it is fundamental to slightly colour the products using the LW2 Wood & Water tinting system. Check the product TDS and the relevant CYCLE SHEETS.





**ive**

# SEMI COVERING EFFECT PROTECTIVE CYCLES

They give protection by colouring the wood without covering it completely. The colour range varies from the most transparent stained colours to replicate the most popular wood to solid semi-transparent colours that interact with the wood to create new visual effects.



## EASY OIL SEMI TRANSPARENT SINGLE PRODUCT CYCLE

1 OP 001 STAIN OIL WB  
(COLOURED)



2 OP 001 STAIN OIL WB  
(COLOURED)



3 OP 001 STAIN OIL WB  
(COLOURED)



\* For softwood it is recommended to apply OP 10 UNIFORMING PRIMER OIL WB in advance

## UNIVERSAL SEMI TRANSPARENT STANDARD CYCLE

1 OP 10 UNIFORMING  
PRIMER OIL WB



2 OP 001 STAIN OIL WB  
(COLOURED)



3 OP SERIES FINISHES  
(SLIGHTLY COLOURED)



can be catalysed with 5%  
HYDROCAT 0094

## SOFT WOOD SEMI TRASPARENT PREMIUM HIGH QUALITY CYCLE SOFTWOOD

1 OP 10 UNIFORMING  
PRIMER OIL WB



2 OP SERIES FINISHES  
(COLOURED)



3 OP SERIES FINISHES  
(SLIGHTLY COLOURED)



can be catalysed with 5%  
HYDROCAT 0094

## HARD WOOD SEMI TRASPARENT PREMIUM HIGH QUALITY CYCLE HARDWOOD

1 OP 001 STAIN OIL WB  
(COLOURED)



2 OP SERIES FINISHES  
(SLIGHTLY COLOURED)



3 OP SERIES FINISHES  
(SLIGHTLY COLOURED)



can be catalysed with 5%  
HYDROCAT 0094

When coating wood rich in extractives for light pigmented colours, OP 11 TANNIN BLOCK WB is recommended as first application. To further increase product durability, it is fundamental to slightly colour the products using the LW2 Wood & Water tinting system. Check the product TDS and the relevant CYCLE SHEETS.





# PIGMENTED PROTECTIVE CYCLES WITH COVERING EFFECT

They provide protection by completely colouring the wood while leaving its grain visible. They allow the colouring of manufactured items in any colour from the international standards and the IVE and Lechler Color Design ranges.



## EASY OIL SOLID COLOR SINGLE PRODUCT CYCLE

1 OP 001 STAIN OIL WB  
(COLOURED)



2 OP 001 STAIN OIL WB  
(COLOURED)



3 OP 001 STAIN OIL WB  
(COLOURED)



## UNIVERSAL SOLID COLOR STANDARD CYCLE

1 OP 10 UNIFORMING  
PRIMER OIL WB



2 OP 001 STAIN OIL WB  
(COLOURED)



3 OP SERIES FINISHES  
(COLOURED)



can be catalysed with 5%  
HYDROCAT 0094

## SOFT WOOD SOLID COLOR PREMIUM HIGH QUALITY CYCLE SOFTWOOD

1 OP 10 UNIFORMING  
PRIMER OIL WB



2 OP SERIES FINISHES  
(COLOURED)



3 OP SERIES FINISHES  
(COLOURED)



can be catalysed with 5%  
HYDROCAT 0094

## HARD WOOD SOLID COLOR PREMIUM HIGH QUALITY CYCLE HARDWOOD

1 OP 001 STAIN OIL WB  
(COLOURED)



2 OP SERIES FINISHES  
(COLOURED)



3 OP SERIES FINISHES  
(COLOURED)



can be catalysed with 5%  
HYDROCAT 0094

When coating wood rich in extractives for light pigmented colours, OP 11 TANNIN BLOCK WB is recommended as first application. To further increase product durability, it is fundamental to slightly colour the products using the LW2 Wood & Water tinting system. Check the product TDS and the relevant CYCLE SHEETS.





**IVE S.r.l.**

Società con unico socio persona giuridica  
Sede legale Via Arturo Toscanini, 53  
20831 Seregno (MB)  
Tel. +39 0362 231401  
Fax +39 0362 229691  
e-mail: mail@ive.it  
pec mail: ive@pec.it  
www.ive.it

Direzione e coordinamento  
Lechler S.p.A.

**Uffici Amministrativi**

Via Cecilio, 17 - 22100 Como (CO)  
Tel. +39 031 586 389  
Fax +39 031 586 260  
amministrazione@ive.it

**Deposito di Brugnera** (Pordenone)

Via Taglio, 101 - 33070 Brugnera (PN)  
Tel. +39 0434 623095  
Fax +39 0434 608768  
brugnera@ive.it

**Deposito di Foligno** (Perugia)

Via Bianca, 29 - 06037 S. Eraclio di Foligno (PG)  
Tel. +39 0742 670515  
Fax. +39 0742 67652  
foligno@ive.it

[www.lechler.eu](http://www.lechler.eu)

